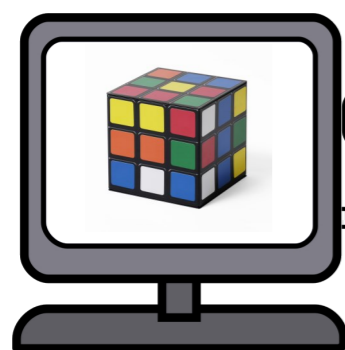
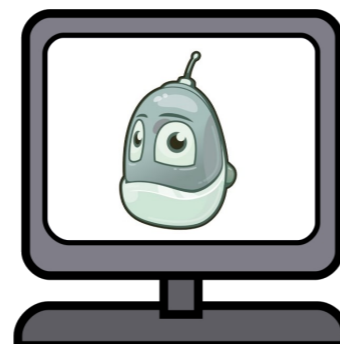


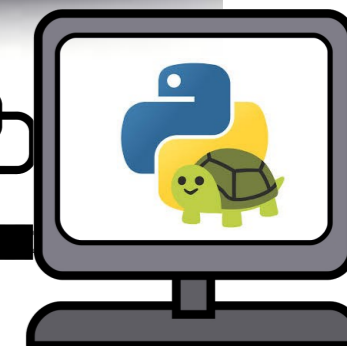
Year 7 Computing Learning Journey



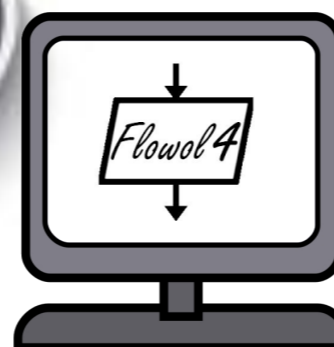
Jan 24—Feb 24
Computational Thinking



Apr 24—Jun 24
Kodu



Jun 24—Jul 24
Python (Turtle)



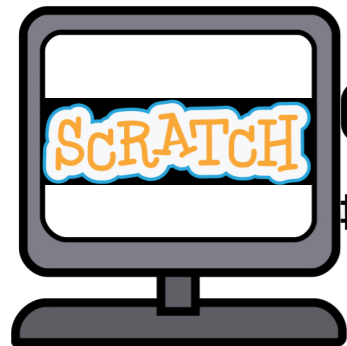
Mar 24— Apr 24
Flowol



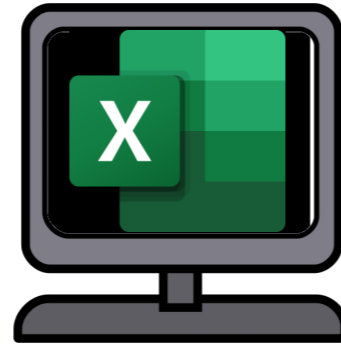
Sept 23—Dec 23
Discovery



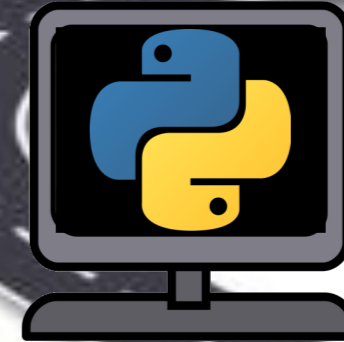
Year 8 Computing Learning Journey



Nov 23—Dec 23
Building a Game



Mar 24—May 24
Spreadsheets



Jun 24-Jul 24
Python



Jan 24—Mar 24
UTSSR



Sept 23 — Nov 23
Data Representation



Year 9 Computing Learning Journey



Apr 24—Jul 24
Photoshop



Sept 23—Dec 23
Computer Systems



Jan 24—Apr 24
User Interface

Year 10 23-25 BTEC DIT

Learning Journey

Sept 23—Oct 23

Practice Assignment - Component 1 Learning Aim A:

Understand interface design for individuals and organisations

A1: User interfaces

A2: Audience needs

A3: Design principles

A4: Designing an efficient user interface

Nov 23—Dec 23

Practice Assignment—Component 1 Learning Aim B:

Use project planning techniques to plan, design and develop a user interface

B1: Project planning techniques

B2: Creating a project proposal and plan

B3: Creating an initial design

C1: Review

May 24—Jul 24

Component 2 Learning Aim

A:

Understand how data is collected by organisations and its impact on individuals

A1: Characteristics of Data and information

A2: Representing information

A3: Ensuring data is suitable for processing

A4: Data collection

A5: Quality of information

A6 : Sectors that use data modelling

A7: Threats to Individuals

Jan 24—Apr 24

Component 1 Assignment

Summative Assessment and Internal Marking



Year 11 23-25 BTEC DIT

Learning Journey

Sept 24—Dec 24

Component 2 Assignment

Learners will understand how data can be imported from an external source. They will then explore how to accurately apply data processing methods to aid decision making.

Be able to draw conclusions and re-view data presentation methods.

B1 Data Processing Methods

B2 Producing a Dashboard

C1 Drawing Conclusions based on findings in the data

C2 How presentation affects understanding



Jan 25—Feb 25

Component 3:

A1 Modern Technologies

A2 Impact of Modern Technologies

Apr 25— May 25

Component 3:

C1 Responsible Use

C2 Legal and Ethical

D1 Forms of Notation

May 2025

Exam:

**Thursday 2nd May
2024**

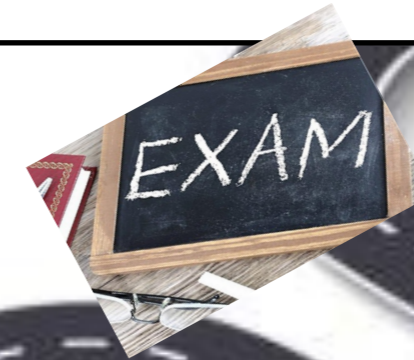
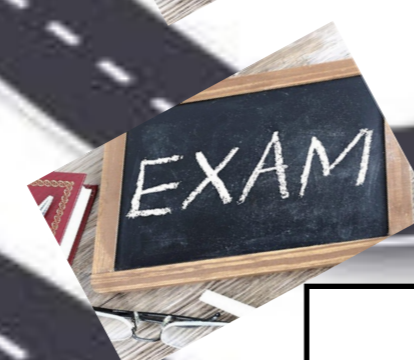
Feb 25—Apr 25

Component 3:

B1 Threats to Data

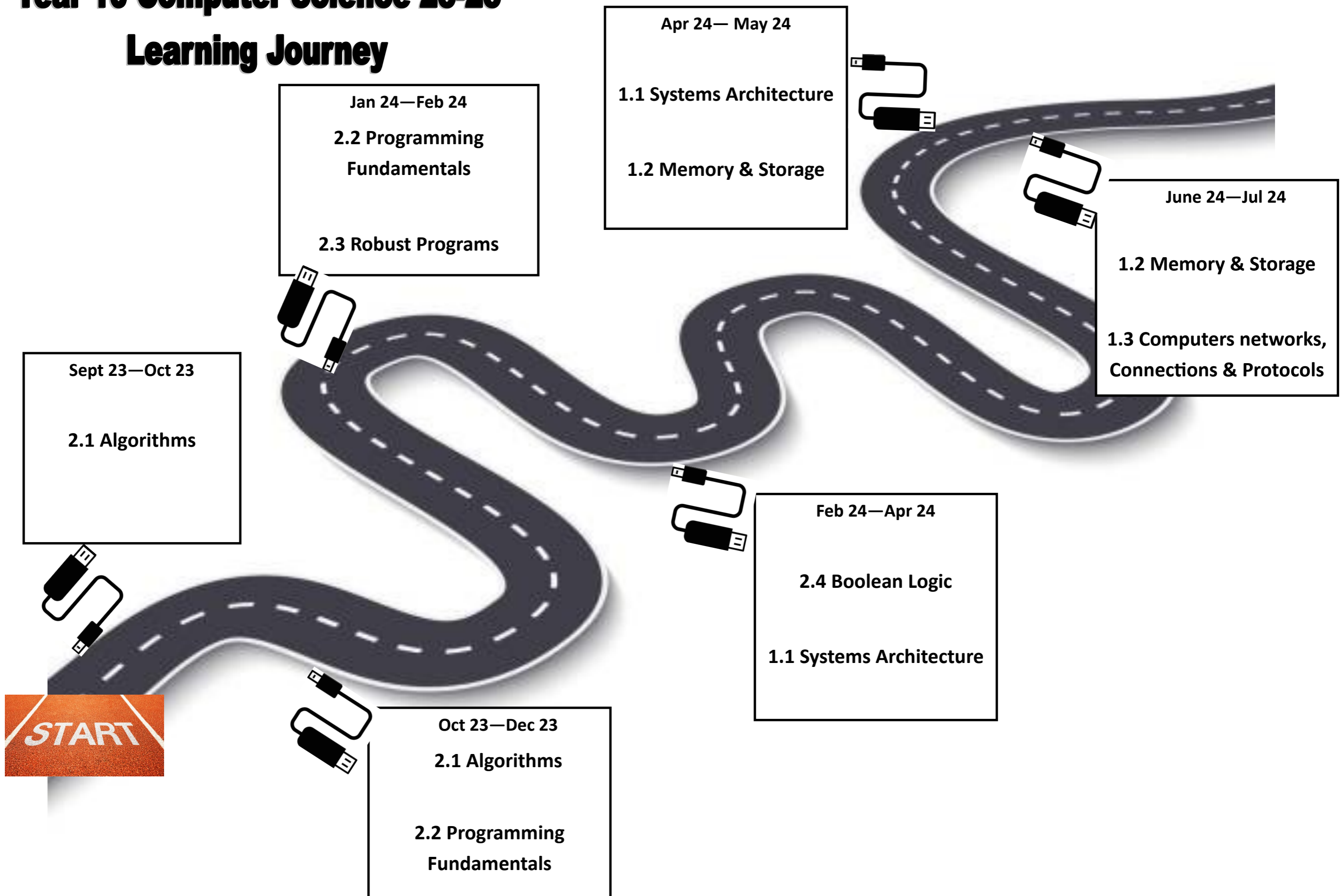
B2 Prevention and management of threats to data

B3 Policy



Year 10 Computer Science 23-25

Learning Journey



Year 11 Computer Science 23-25

Learning Journey



Jan 25—Feb 25

1.6 Ethical, Legal, Cultural
and Environmental Impacts

Apr 25— Jun 25

Revision

Sept 24—Oct 24

1.3 Computers net-
works, Connections &
Protocols

2.5 Programming
Languages and IDEs

Exam Dates:

Paper 1:

Wednesday 15th May
2024

Paper 2:

Tuesday 21st May 2024

Feb 25—Apr 25

Revision

Nov 24—Dec 24

1.4 Network Security

1.5 Systems Software

START